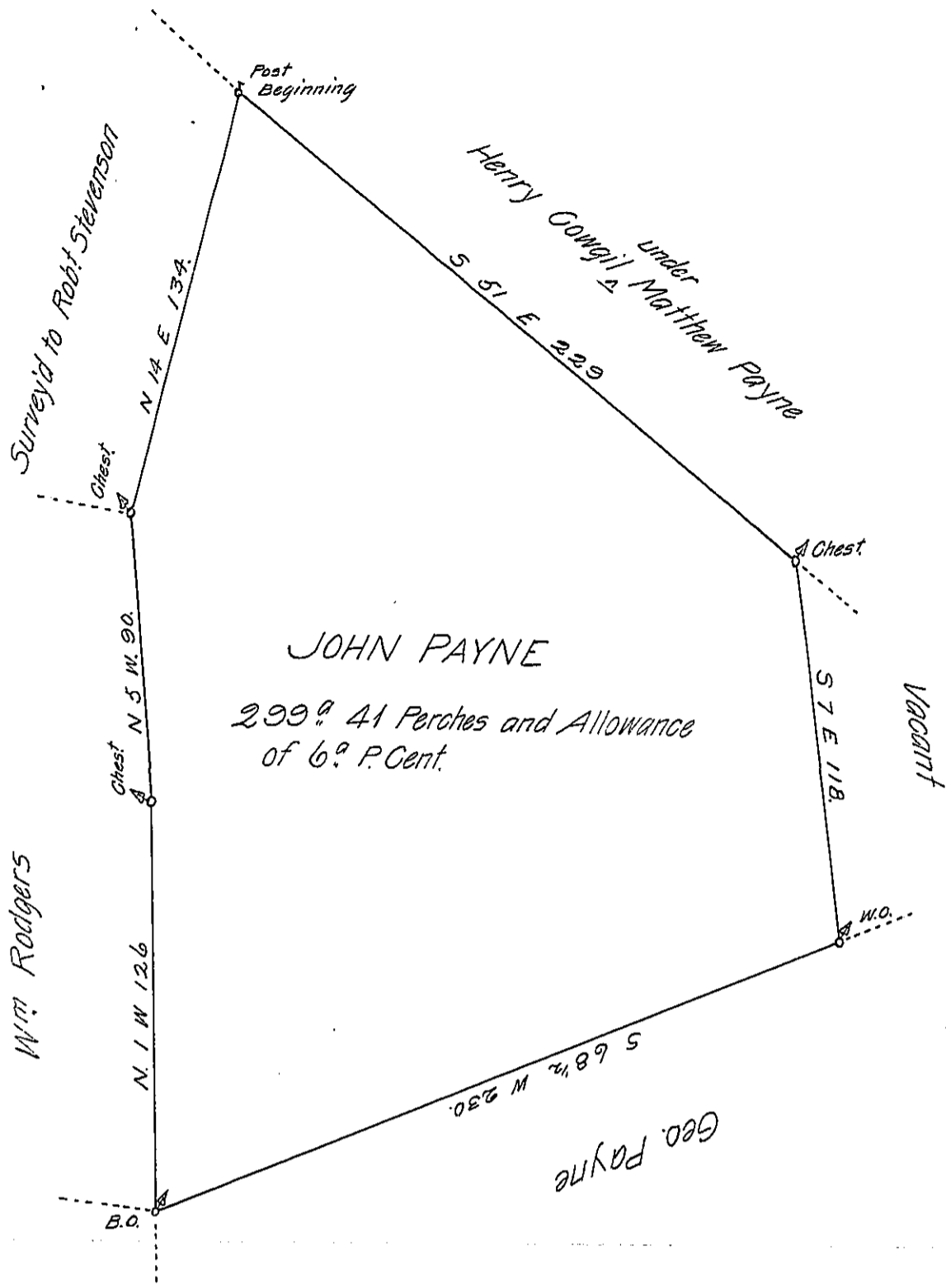


FORM No. 1.



A Draught of a Tract of Land Situate in Fawn Township York County Survey'd to John Payne in pursuance of Two Warrants the one, dated November 8th 1753. the other for 40th dated March 20th 1758. Surveyed the 23^d day of the 10th Mo. 1765.
 P. Wm Matthews D.S.

N.B. This Land was Run before by Thomas Armor whose lines I have Exactly followed By Boxing the Trees I find the lines were run about seven years ago.

To Jn^o Lukens Surv^r Gen!

IN TESTIMONY that the above is a copy of the original remaining on file in the Department of Internal Affairs of Pennsylvania, made conformably to an Act of Assembly approved the 16th day of February, 1833, I have hereunto set my Hand and caused the Seal of said Department to be affixed at Harrisburg, this thirtieth day of April 1906.

Isaac R. Brown
 Secretary of Internal Affairs.